



**Milton Road, Herne Hill, SE24**

1 bedroom flat - conversion for sale

**£550,000**

Leasehold

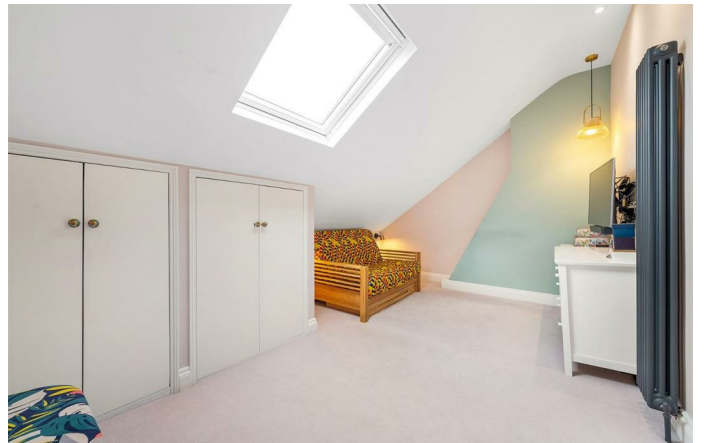
## Property Details

A beautifully presented one double bedroom flat with an additional loft room, arranged over the top floors of a handsome Victorian conversion, lovingly refurbished over the past five years. A shared front garden and small internal communal entrance add charm and a sense of community. Inside, a private entrance leads to a bright and airy first-floor reception room spanning the full width of the building, with two striking arched windows flooding the space with natural light and bespoke cabinetry providing both style and practical storage. The separate kitchen features crisp white cabinetry and generous work surfaces. The bedroom is a spacious double, enjoying a peaceful outlook, complemented by a convenient separate W/C on the same level. Upstairs, the loft room and bathroom are privately positioned, offering excellent separation from the main living areas. The loft room benefits from built-in wardrobes, a Velux window, and eaves storage. Throughout, neutral décor, high ceilings, and period features blend seamlessly with modern upgrades, creating a light, versatile, and characterful home.

## Features

- One double bedroom
- Additional loft room
- Split-level Victorian conversion with bright ambience
- Over 800 square feet
- WC on first floor
- Sought-after Poets Corner location
- Brockwell Park moments away
- Central Herne Hill with its village-esque vibe just a five-minute stroll
- Brixton a ten-minute walk
- Chain-free

Council tax band B    EPC rating D (60)



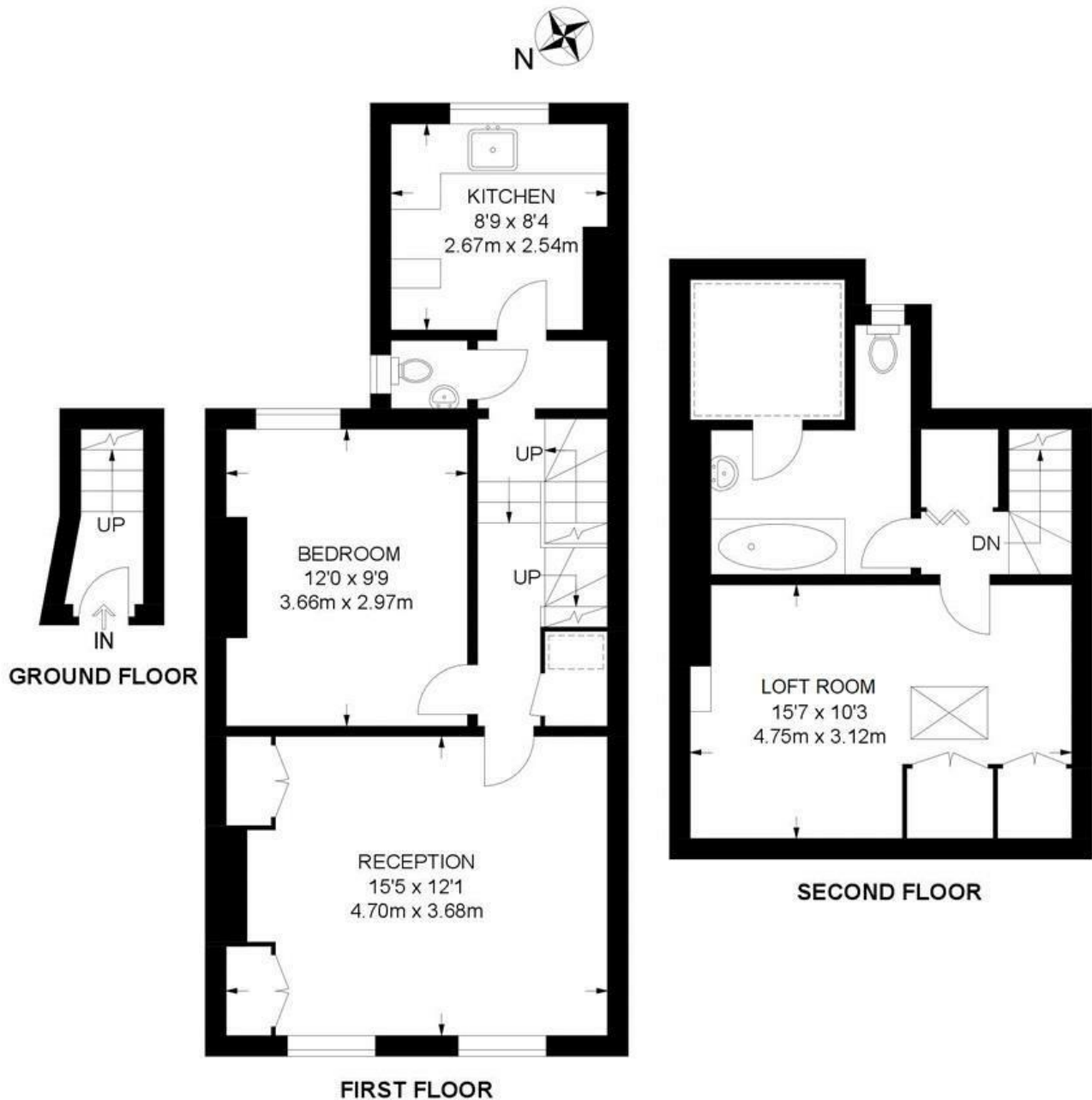


Milton Road, Herne Hill, SE24

**Milton Road, SE24**

**1 Bedroom Flat**

APPROXIMATE GROSS INTERNAL AREA: **810 SQ FT / 75.2 SQ M**



While we try our very best, floor plans are produced as a guide only and we take no responsibility for the precise accuracy with which any property is represented.

Milton Road, Herne Hill, SE24

